

ScanTemp is the most effective way to scan people's body temperature.
By the use of augmented reality, get instant and accurate results.

Plug-and-play & Start measuring!

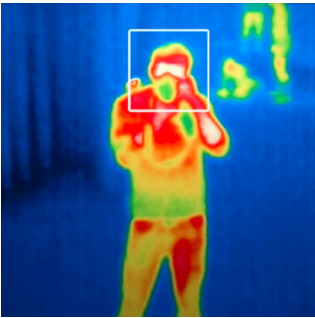


Scantemp is an AI-based temperature scanner, using thermal imaging for fast and accurate results. Our contactless system effectively responds to high body temperature and sends immediate alerts to help you act early. Our device can be deployed in public spaces and private areas, which include: Public Transport, Work Environments, Commercial buildings, Campuses, Shopping Centers.

How does Scantemp work?

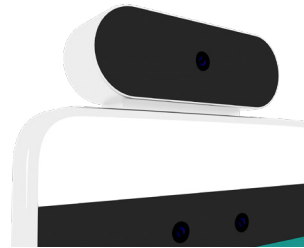
Easy to use.

Contactless Temperature Measurement



ScanTemp quickly measures people's temperatures by using a binocular wide dynamic camera that scans within a distance of 50-150cm. It only takes about 0.2 seconds to scan. Just stand before ScanTemp and check your temperature.

Scantemp is a face detection and temperature measurement device, that integrates facial recognition and infrared heating imaging. Our temperature screening solution enables real-time fever detection in public places, such as schools, commercial buildings, airports, and transport to ensure public health. Scantemp detects the most common symptoms of COVID-19, which is high body temperature.



Detailed and Precise.

Binocular wide dynamic camera

Compared with monocular camera, it can obtain higher resolution images at faster speed than monocular cameras. The binocular camera is powered by a quad core CPU with 2G RAM memory.

Contactless and accurate.

Real Time Feedback



Using Augmented Reality, Scantemp detects faces in 0.2 seconds. Every scanned individual gets real time feedback on their body temperature. People with a high body temperature will be notified immediately, the alert mode is set at 37.4°C.



Industry standard.

Easy Install Just Plug & Play

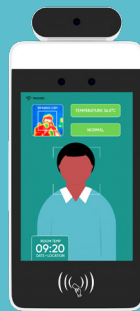
The Scantemp uses 230V, and supports Wifi. Furthermore, the Scantemp scanner is equipped with an ethernet port, an audioport (mini-jack), and USB ports. Read or technical sheet (pdf) for more details.

For every location.

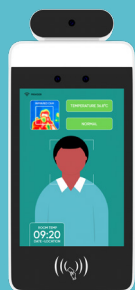
Indoor and Outdoor Applications



ScanTemp is developed to measure body temperatures anywhere, indoor and outdoor. Scantemp is the ideal solution for stores, campuses, airports, public transport, and so much more. ScanTemp is the most effective way to contactlessly measure people's temperature.



01. Scantemp Wall



01. Scantemp Wall Details

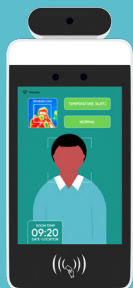
The ScanTemp wall is very easy to install. It quickly scans the temperature by detecting faces that look into the scanner. Just Plug & Play the device in a 230V power source.

€1680
excl. VAT

Delivery across Europe.
Detailed delivery costs on demand.

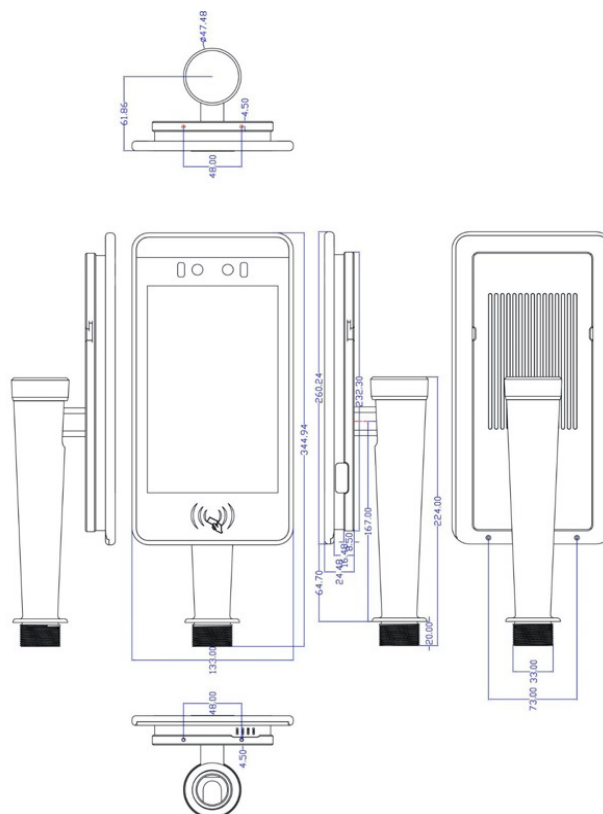
Camera	Pixels	Two mega pixels
	Type	Binocular wide dynamic camera
	Measurement distance	50-150cm
	White balance	Automatic
Screen	Size	8.0 inch IPS LCD screen
	Resolution	800x1280
Processor	CPU	RK3288 Quad core • RAM 2G • main frequency is up to 1.8GHz
	Local memory	EMMC 8G
Accessories	Fill light	LED and infrared double fill lights
	Embedded second generation ID card reader	Support type-a /B M1 card reading, support the second generation, three generations of id card reading, support to read A card B card UID
	IC card reading module	Support the MifareSS0, MifareS70, FM11RF08 series of CARDS to obtain the physical card number in accordance with the ISO/IEC14443A agreement
Ports	Network Module	Support Ethernet, wireless (WIFI)
	Audio	Support for 2.5w /4R speakers
	USB Ports	USB OTG*1, USBHOST*1 standard port A
	Serial Communication Interface	RS232 com port*1
	Relay output	Door opening signal output*1
	Wiggins interface	Wigan 26/34 output* • Wigan 26/34 input
	Upgrade	Support u-boot upgrade
	Wired network interface	RJ45 Ethernet port

Function	Face Detection	Support for detection and tracking of multiple people at the same time
	Face database capacity	Maximum 20000
	Face recognition	Support
	Face Comparison	Support
	Stranger Detection	Support
	Recognition distance Settings	Support
	UI Interface settings	Support
	Remote upgrade	Support
	Ports of device	Interfaces include device management, people/photo management, record query, etc
	Usage	Support public cloud deployment, private deployment, LAN use, used stand-alone
General parameter	Protection grade	IP65 • outdoor dustproof waterproof function
	Power supply	DC12V (±10%)
	Operating temperature	-10°C~60°C
	Storage temperature	-20°C~60°C
	Power consumption	13.5W(Max)
	Installation method	Gate access door bracket installation
	Dimensions	260.18x132.88x61.7(mm)
	Weight	1.5kg



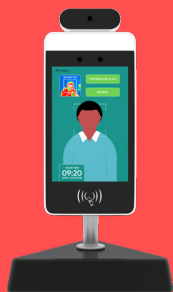
01. Scantemp Wall Dimensions

Contact us at info@scantemp.eu for more detailed technical drawings





02. Scantemp Table



02. Scantemp Table Details

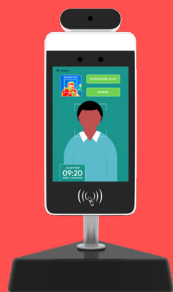
The Scantemp Table is ideal for smaller places with smaller audiences. The device can be used on a surface, for contactless use. ScanTemp Table is perfect for reception desks, entry halls, closed office areas.

€1820
excl. VAT

Delivery across Europe.
Detailed delivery costs on demand.

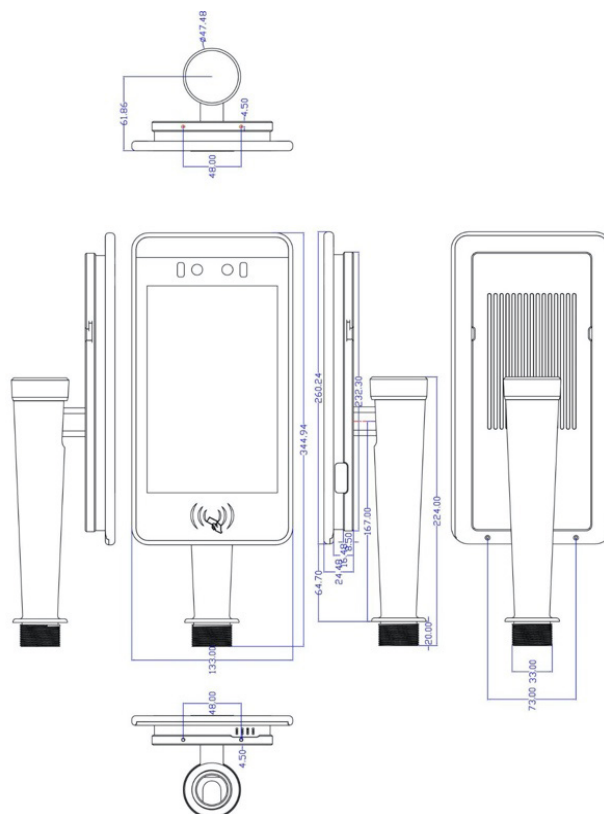
Camera	Pixels	Two mega pixels
	Type	Binocular wide dynamic camera
	Measurement distance	50-150cm
	White balance	Automatic
Screen	Size	8.0 inch IPS LCD screen
	Resolution	800x1280
Processor	CPU	RK3288 Quad core • RAM 2G • main frequency is up to 1.8GHz
	Local memory	EMMC 8G
Accessories	Fill light	LED and infrared double fill lights
	Embedded second generation ID card reader	Support type-a /B M1 card reading, support the second generation, three generations of id card reading, support to read A card B card UID
	IC card reading module	Support the MifareS50, MifareS70, FM11RF08 series of CARDS to obtain the physical card number in accordance with the ISO/IEC14443A agreement
Ports	Network Module	Support Ethernet, wireless (WIFI)
	Audio	Support for 2.5w /4R speakers
	USB Ports	USB OTG*1, USBHOST*1 standard port A
	Serial Communication Interface	RS232 com port*1
	Relay output	Door opening signal output*1
	Wiggins interface	Wigan 26/34 output* • Wigan 26/34 input
	Upgrade	Support u-boot upgrade
	Wired network interface	RJ45 Ethernet port

Function	Face Detection	Support for detection and tracking of multiple people at the same time
	Face database capacity	Maximum 20000
	Face recognition	Support
	Face Comparison	Support
	Stranger Detection	Support
	Recognition distance Settings	Support
	UI Interface settings	Support
	Remote upgrade	Support
	Ports of device	Interfaces include device management, people/photo management, record query, etc
	Usage	Support public cloud deployment, private deployment, LAN use, used stand-alone
General parameter	Protection grade	IP65 • outdoor dustproof waterproof function
	Power supply	DC12V (±10%)
	Operating temperature	-10°C~60°C
	Storage temperature	-20°C~60°C
	Power consumption	13.5W(Max)
	Installation method	Gate access door bracket installation
	Dimensions	260.18x132.88x61.7(mm)
	Weight	1.5kg



02. Scantemp Table Dimensions

Contact us at info@scantemp.eu for more detailed technical drawings





03. Scantemp Floor



03. Scantemp Floor Details

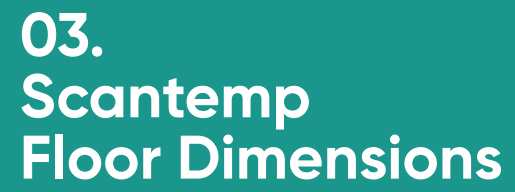
The ScanTemp Floor is ideal for places with larger crowds. ScanTemp quickly measures people's temperatures and informs them whether they have a high body temperature.

€1940
excl. VAT

Delivery across Europe.
Detailed delivery costs on demand.

Camera	Pixels	Two mega pixels
	Type	Binocular wide dynamic camera
	Measurement distance	50-150cm
	White balance	Automatic
Screen	Size	8.0 inch IPS LCD screen
	Resolution	800x1280
Processor	CPU	RK3288 Quad core • RAM 2G • main frequency is up to 1.8GHz
	Local memory	EMMC 8G
Accessories	Fill light	LED and infrared double fill lights
	Embedded second generation ID card reader	Support type-a /B M1 card reading, support the second generation, three generations of id card reading, support to read A card B card UID
	IC card reading module	Support the MifareS50, MifareS70, FM11RF08 series of CARDS to obtain the physical card number in accordance with the ISO/IEC14443A agreement
Ports	Network Module	Support Ethernet, wireless (WIFI)
	Audio	Support for 2.5w /4R speakers
	USB Ports	USB OTG*1, USBHOST*1 standard port A
	Serial Communication Interface	RS232 com port*1
	Relay output	Door opening signal output*1
	Wiggins interface	Wigan 26/34 output* • Wigan 26/34 input
	Upgrade	Support u-boot upgrade
	Wired network interface	RJ45 Ethernet port

Function	Face Detection	Support for detection and tracking of multiple people at the same time
	Face database capacity	Maximum 20000
	Face recognition	Support
	Face Comparison	Support
	Stranger Detection	Support
	Recognition distance Settings	Support
	UI Interface settings	Support
	Remote upgrade	Support
	Ports of device	Interfaces include device management, people/photo management, record query, etc
	Usage	Support public cloud deployment, private deployment, LAN use, used stand-alone
General parameter	Protection grade	IP65 • outdoor dustproof waterproof function
	Power supply	DC12V (±10%)
	Operating temperature	-10°C~60°C
	Storage temperature	-20°C~60°C
	Power consumption	13.5W(Max)
	Installation method	Gate access door bracket installation
	Dimensions	260.18x132.88x61.7(mm)
	Weight	1.5kg

[illegible]

Certificate of conformity

Touch all-in-one Computer Display • Information Release Advertising Display • Digital Signage Display

01. EN 55022:2010 • EN55024:20+A1:2015 • EN61000-3-2:2014 - EN 610000-3-3:2013 - ISSUE DATE: 13.04.2017
02. Applicable Standard(s): EN 60950-1: 2006+A11:: 2009+A1 : 2010+A12: 2001+A2: 2013 - ISSUE DATE: 13.04.2017

Certificate – 證明書 – Сертификат – Certificat – 증명서 – certificado

CERTIFICATE OF CONFORMITY

Certificate No. CTK2017027006EMC

Certificate's Holder : Technology Co., Ltd.

Address :
Beijing, China

Product Name : Touch all-in-one Computer Display
Information Release Advertising Display
Digital Signage Display

Model(s) : For details see the appendix

Applicable Standard(s) : EN 55022:2010
EN 55024:2010+A1: 2015
EN 61000-3-2:2014
EN 61000-3-3:2013

The submitted products have been tested by us with the above standards and found in compliance with the following European Directives:

Electromagnetic Compatibility Directive 2014/30/EU

Note: This certificate is only valid for the equipment and configuration described, and in conjunction with the test data detailed above. The CE mark as show joined can be used, under the responsibility of the manufacturer or the importer, after completion of the CE Declaration of Conformity and in accordance with the above directives.

Issuing Date: 13.04.2017
Expiry Date: 12.04.2022

 
Thomas Diong
Chief Certification Manager

CERTITEK TESTING AND CERTIFICATION LTD
20-22 WENLOCK ROAD, LONDON, N1 7GU, ENGLAND
☎ + 86 20 3921 1670 ☎ + 86 20 3921 1640 ✉ Info@certitek.co.uk 🌐 www.certitek.co.uk v2.0

Certificate – 證明書 – Сертификат – Certificat – 증명서 – certificado

CERTIFICATE OF CONFORMITY

Certificate No. CTK2017027006LVD

Certificate's Holder : Technology Co., Ltd.

Address :
Beijing, China

Product Name : Touch all-in-one Computer Display
Information Release Advertising Display
Digital Signage Display

Model(s) : For details see the appendix

Applicable Standard(s) : EN 60950-1: 2006+A11: 2009+A1: 2010
+A12: 2011+A2: 2013

The submitted products have been tested by us with the above standards and found in compliance with the following European Directives:

Low Voltage Directive 2014/35/EU

Note: This certificate is only valid for the equipment and configuration described, and in conjunction with the test data detailed above. The CE mark as show joined can be used, under the responsibility of the manufacturer or the importer, after completion of the CE Declaration of Conformity and in accordance with the above directives.

Issuing Date: 13.04.2017
Expiry Date: 12.04.2022

 
Thomas Diong
Chief Certification Manager

CERTITEK TESTING AND CERTIFICATION LTD
20-22 WENLOCK ROAD, LONDON, N1 7GU, ENGLAND
☎ + 86 20 3921 1670 ☎ + 86 20 3921 1640 ✉ Info@certitek.co.uk 🌐 www.certitek.co.uk v2.0



**SCAN
TEMP**

—

—

—

—

—

CONTACTLESS
TEMPERATURE
MEASUREMENT

Scantemp.eu
info@scantemp.eu
www.scantemp.eu

Vliegplein 43
9991 Maldegem
Belgium

+32 (0)50 71 81 40
IBAN: BE68 0015 4539 7734
BE 0 895 393 340